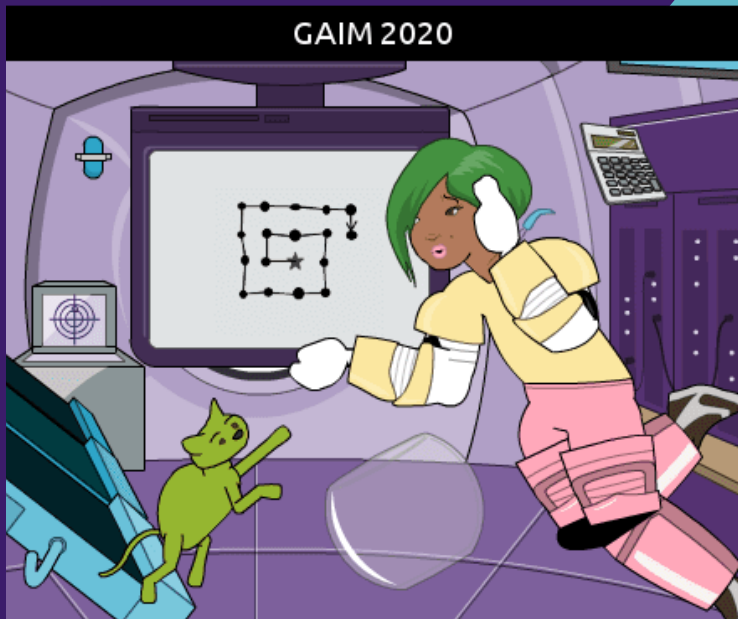


GAIM

GIRLS' ADVENTURES IN MATH



Shirley's spaceship is currently at the star. She plans to drop 2020 sensors, one at each location indicated by a black dot in the pattern begun above. No sensor is dropped at her starting location. How many sensors will there be on the last straight segment that Shirley travels, right after she drops the 2020th sensor?

Register on our website!
www.girlsadventuresinmath.com



Girls' Adventures in Math: A Comic-Based Math Competition Featuring Four of History's Great Women

April 26th, 2020, 2:30PM – 5:30PM

Duffield Hall, Cornell University
343 Campus Road, Ithaca, NY 14853

\$79/Team*, Financial Aid Available**

80 min Team-Based Math Competition + Strategy Games
Fully an Unforgettable Experience

Upper Elementary Division (grades 3-5)
Middle Division (grades 6-8)

*Teams registering after **Mar 1** will be subject to late registration pricing.

****Financial Aid:** Title 1 Schools receive 2 teams free of charge.
We also offer financial aid to teams from non-Title 1 schools on the basis of need. Apply for financial aid [on our website!](#)